

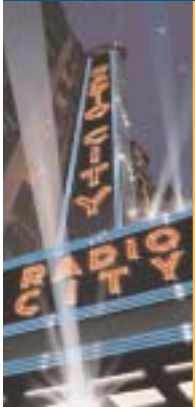


The  
Infinite  
Mind

**The Infinite Mind**  
*State of Mind: America 2004*



**State of Mind: America 2004**  
A special broadcast event of The Infinite Mind



**The Infinite Mind  
Presents  
State of Mind: America 2004**

7:00 p.m., May 3, 2004  
Radio City Music Hall

With your host  
Dr. Fred Goodwin

And commentary by  
John Hockenberry

*State of Mind: America 2004* is a special presentation of **The Infinite Mind**, the national, award-winning weekly public radio series exploring the art and science of the human mind. **The Infinite Mind** is heard weekly in more than 200 public radio markets across the U.S, with more than one million listeners. *State of Mind: America 2004* will begin airing May 12, 2004. (Check local listings for exact time and date.)

A non-profit production of **Lichtenstein Creative Media** in association with WNYC/New York and the New York Foundation for the Arts

© 2004 Lichtenstein Creative Media  
“The Infinite Mind,” “State of Mind” (pending) and  
“State of Mind: 2004” are registered trademarks of Lichtenstein Creative Media.

**The Infinite Mind  
State of Mind: America 2004**

**Introduction**

**Announcer**  
Katina Kalin

**Welcome**  
Dr. Fred Goodwin, Host of **The Infinite Mind**

**Video**

**Transforming the Mental Health System**  
A. Kathryn Power, Center for Mental Health Services, SAMHSA

**“One Hundred Ways to Lose A Man”**  
from *Wonderful Town*, with Linda Muggleston as Ruth Sherwood

**Bipolar Disorder in the Brain**  
Dr. Stephan Heckers, McLean Hospital  
Dr. Robert Post, National Institute of Mental Health

**“Schadenfreude”**  
from *Avenue Q*, with Natalie Venetia Belcom as Gary Coleman,  
and Rick Lyon and Jennifer Barnhart as Nicky

**Beyond Compliance: A New Psychotherapy for Bipolar Disorder**  
Dr. Dominic Lam, Institute of Psychiatry, King’s College, London

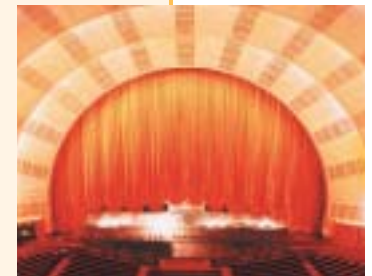
**Reading and Interview**  
Carrie Fisher, actress and author, with a reading from *The Best Awful*  
**“The Wizard and I”** from *Wicked*, with Idina Menzel as Elphaba

**Fact or Fad? The Bipolar Spectrum Debate**  
Dr. Hagop Akiskal, San Diego Veterans Administration Medical Center  
Dr. Joel Paris, McGill University

**Commentary**  
John Hockenberry

**Closing Remarks**  
Dr. Fred Goodwin

Please Note: *This is a live taping  
of a radio program.  
Please silence your cell phones and beepers. No  
photographs, please.  
If you must leave your seat, we would appreciate it if  
you could do so between segments. Thank you!*



# State of Mind: America 2004

## A special broadcast event of The Infinite Mind

Produced by Lichtenstein Creative Media, © 2004

*State of Mind: America 2004* is a special presentation of **The Infinite Mind**, the national, award-winning weekly public radio series exploring the art and science of the human mind. **The Infinite Mind** is heard weekly in more than 200 public radio markets across the U.S., with more than one million listeners. *State of Mind: America 2004* will begin airing May 12, 2004. (Check local listings for exact time and date.)

*Brief biographies of participants, in order of appearance:*



**Fred Goodwin, M.D.** has hosted **The Infinite Mind** since its launch in 1998. He is professor of psychiatry and director of The Center on Neuroscience, Medical Progress, and Society at The George Washington University Medical Center. Dr. Goodwin is the former director of the National Institute of Mental Health. Prior to that, he held a presidential appointment as head of the Alcohol, Drug Abuse, and Mental Health Administration. The author of more than 400 publications, Dr. Goodwin collaborated with Kay Jamison, Ph.D., in writing *Manic-Depressive Illness*, the first psychiatric text to win the Best Medical Book Award from the Association of American Publishers. A new edition of the book is expected in 2005.



**Mike Wallace** has been co-editor and co-host of CBS's news magazine *60 Minutes* since its premiere in 1968. His many honors include a Robert F. Kennedy Journalism Award, nineteen Emmy Awards, three DuPont-Columbia University Awards, and three Peabody Awards. Mr. Wallace's public acknowledgement of his experience with clinical depression has raised awareness of mental illness and the benefits of treatment.



**A. Kathryn Power, M.Ed.** is director of the Center for Mental Health Services (CMHS) of the Substance Abuse and Mental Health Services Administration, which works to improve mental health services for all Americans. Ms. Power is charged with transforming our nation's system of mental health care and putting into action the recommendations of the President's New Freedom Commission on Mental Health. Prior to this appointment, Ms. Power directed the Rhode Island Department of Mental Health, Retardation and Hospitals.



**Stephan Heckers, M.D.** is director of the Schizophrenia and Bipolar Disorder Program at McLean Hospital in Belmont, Massachusetts. Dr. Heckers uses neuroimaging, cognitive neuroscience, and anatomical investigation to study the neural basis for psychotic disorders.

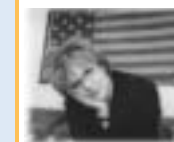


**Robert Post, M.D.** is chief of the biological psychiatry branch of the National Institute of Mental Health. His work on the "kindling model" of bipolar disorder is widely recognized as foundational to many of the biologically based treatments that have been developed.

**Dominic Lam, Ph. D** is a reader at the Institute of Psychiatry, King's College, London. He has pioneered research in the use of cognitive techniques to help bipolar patients identify the early signs of potential relapses and improve their quality of life. Dr. Lam has published widely on unipolar depression and bipolar disorder and is author of the book *Cognitive Therapy for Bipolar Disorder: A Therapist's Guide to Concepts, Methods and Practice*. He is a Founding Fellow of the International Association for Cognitive Therapy.



**Carrie Fisher** is an acclaimed writer, actress, and born Hollywood insider. In recent years she has raised public awareness of mental illness and its treatment by speaking publicly about her long struggle to acknowledge and find treatment for bipolar disorder, which she says nearly took her life. The daughter of actress Debbie Reynolds and singer Eddie Fisher, Carrie Fisher made her screen debut at age 17 in *Shampoo*, which she followed up with roles in movies including *Star Wars* (Princess Leia Organa), *Hannah and Her Sisters*, and *When Harry Met Sally*. Her darkly funny novels include the semi-autobiographical *Postcards from the Edge*, which was made into a movie starring Meryl Streep, and, hot off the press, *The Best Awful*.



**Hagop Akiskal, M.D.** is professor of psychiatry and director of the International Mood Center at the San Diego Veterans Administration Medical Center. Previously, he was a senior science advisor to the director of the National Institute of Mental Health. Since 1996, Dr. Akiskal has served as editor-in-chief of the *Journal of Affective Disorders*.



**Dr. Joel Paris** chairs the Department of Psychiatry at McGill University in Montreal. His career focuses on psychiatric education and personality disorders. He is the author of over 100 publications on personality disorders; recent books include *Myths of Childhood* and *Personality Disorders Over Time: Precursors, Course, and Outcome*. Dr. Paris is past president of the Association for Research on Personality Disorders.



**John Hockenberry** is among the most respected broadcast journalists working today. He has contributed weekly commentaries to **The Infinite Mind** since its first broadcast. Mr. Hockenberry is a correspondent for *Dateline NBC*, prior to which he reported for *National Public Radio* and *ABC News*. At last count, his honors include two Peabody Awards, a DuPont-Columbia University Award, and four Emmies. Mr. Hockenberry is the author of a memoir, *Moving Violations: War Zones, Wheelchairs and Declarations of Independence*, and a novel, *A River Out of Eden*. He has written for *The New York Times*, *Columbia Journalism Review*, *Washington Post*, *ID Magazine*, and *New Yorker*.



## THE MUSICAL MIND ON BROADWAY

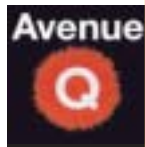
## LICHTENSTEIN CREATIVE MEDIA



**Wonderful Town** With a dazzling score by Leonard Bernstein and witty lyrics by Betty Comden and Adolph Green, *Wonderful Town* is the story of Eileen and Ruth, two sisters who are fresh off the bus from Ohio, bursting with dreams of making it big, falling in love and living happily ever after in New York City - the city we all love. Now wonderful at the Al Hirschfeld Theatre.

LINDA MUGLESTON (Ruth Sherwood) Ms. Mugleston's Broadway credits include: *Nine*, *Into the Woods*, *Kiss Me*, *Kate* and *On the Town*.

**Avenue Q** This hit Broadway musical features music and lyrics by Robert Lopez and Jeff Marx. *Avenue Q* is a grown-up puppet show telling the story of Princeton, a bright-eyed college graduate who comes to New York City with big dreams and a tiny bank account. It won the 2003 Lucille Lortel Award for Outstanding New Musical and now enjoys critical and popular acclaim at the Golden Theater.



NATALIE VENETIA BELCON (Gary Coleman) has appeared on Broadway in *Rent*. Off-Broadway includes *The Bubbly Black Girl Sheds Her Chameleon Skin* and *And the World Goes 'Round*.

RICK LYON (Nicky) has been a professional puppeteer for more than twenty-five years. His television credits include *Sesame Street*, *Bear in the Big Blue House*, and *Between the Lions*. Rick is proud to be making his Broadway debut in roles he originated for *Avenue Q*.

JENNIFER BARNHART (Nicky) is delightedly making her Broadway debut. Her television credits include *Sesame Street*, *Bear in the Big Blue House*, and *Between the Lions*.

**Wicked** Long before Dorothy dropped in, two girls meet in the Land of Oz. One, born with emerald-green skin, is smart, fiery and misunderstood. The other is beautiful, ambitious and very popular. How these two friends end up as the Wicked Witch of the West and Glinda the Good Witch makes for a new musical that's spellbinding audiences at Broadway's Gershwin Theater. *Wicked* features music and lyrics by Stephen Schwartz and book by Winnie Holzman, and is based on Gregory Maguire's novel.



IDINA MENZEL (Elphaba) made her Broadway debut in the original cast of *Rent*, receiving a Tony nomination for her portrayal of Maureen. She earned a Drama Desk nomination as Kate in MTC's *The Wild Party*. Other Broadway roles include Dorothy in *Summer of '42*, Sheila in *Hair*, and Amneris in *Aida*.

EDEN ESPINOSA (Standby for Elphaba) is making her Broadway debut in *Wicked*. Off-Broadway, she starred in the title role of the new musical *Brooklyn* in both its workshop production in New York and at the Denver Civic Theater.

**Lichtenstein Creative Media** is an independent media production company with extensive multimedia production, distribution and educational/community outreach experience, particularly with mental health, human rights and social justice issues. LCM was founded in 1990 by Bill Lichtenstein, a former producer for ABC News, following his diagnosis and recovery from manic-depression. The company has distinguished itself by its production of television and radio programs and films that show that people can and do recover from serious mental illness. The work of the company and its president, Bill Lichtenstein, have been honored with a George Foster Peabody Award – television and radio's highest honor – as well as more than sixty major broadcast and health journalism awards.

LCM produces **The Infinite Mind**, a national, weekly public radio series focusing on all aspects of mental health, neuroscience, and advances in treatment. LCM also produced *West 47<sup>th</sup> Street*, an award-winning documentary film that follows four people with mental illness over three years. More than three million viewers watched its broadcast premiere in August, 2003 on PBS's acclaimed series, *P.O.V.* The film's powerful message and surprising ending led *Newsweek* to call the film "must see" and the *Washington Post* to hail it as "remarkable." The resulting outreach effort was among *P.O.V.*'s most successful in engaging the public, involving 100 community screenings nationwide, including one at Yale University, which showed the film to medical staff and students at Grand Rounds. Among its many honors, the film won Best Documentary at the Atlanta Film Festival and Audience Award at the D.C. Independent Film Festival.

LCM is currently producing *Juveniles in Crisis*, a four-part public television series examining the interconnections between the juvenile justice, juvenile mental health, foster care and education systems. *Hepatitis C: The Stealth Epidemic* will explore the spread of this lethal virus and failure to respond to the public health crisis. Both productions will be featured on PBS's Year of Global Health initiative in 2005.

For more information about LCM's work, to listen to LCM's programs on-line, or to support its nonprofit productions with a tax deductible donation, visit [www.LCMedia.com](http://www.LCMedia.com).

The  
Infinite  
Mind





Major underwriting for the non-production *State of Mind: America 2004* was provided by the John D. and Catherine T. MacArthur Foundation, the U.S. Substance Abuse and Mental Health Services Administration, and in the form of an unrestricted educational grant from Bristol-Myers Squibb Company and Otsuka America Pharmaceutical, Inc.

**Additional funding provided by:**

Contributor: *Distance Learning Network* • Patron: *National Society of Genetic Counselors* • Donor: *Ms. Joanne Cipolla, Mrs. Suzanne Garment, Dr. Curtis Mayernik, Linda Low* • Supporter: *Mr. Peter Campanelli, Ms. Sandra Cerna, Ms. Barbara Delsman, Dr. Peter Jensen, Mr. and Mrs. Guy and Roxanne Lanquetot, Mr. and Mrs. Edward and Bernice Lichtenstein, Mr. Walter Peoples, Dr. Marilyn Peters, Ms. Wendy Tanaka, Angela O'Connell, Barbara P. Srur, M.D. Child & Adolescent Bipolar Foundation*

For information about supporting **The Infinite Mind** or other non-profit productions of Lichtenstein Creative Media, please visit our website at [www.theinfinitemind.com](http://www.theinfinitemind.com).

**Production Credits for *State of Mind: America 2004***

*State of Mind: America 2004* was produced by *June Peoples* • Additional production: *Devorah Klahr* • Technical direction: *Greg Seaton* • Stage and production manager: *Bruce Rayvid* • Production assistance: *Samantha Paige-Graeber and Amy Matsuda* • Dr. Goodwin's assistant: *Joanne Davis* • On-site sound recording: *Remote Recording Inc.* • Interns: *Aryeh First and Ronald Fleming* • "The Theme from **The Infinite Mind**": composed and performed by *Art Labriola* • Audience coordination: *Monika LaNuez and Matt Sislowitz* • Make-Up: *Matt Yeandle of BeautybyMatt.com* • Program notes: *Emily Fisher* • Program and ticket design: *Ellen Kiyler* • Announcer: *Katrina Kalin* • Travel arrangements: *Barbara Freedman at Singer Travel* • Legal counsel: *David Lubell at Propp, Lubell and Lapidus* • The executive producer of **The Infinite Mind**: *June Peoples* • Senior executive producer: *Bill Lichtenstein* • Logistical coordination: *Carmelina Manzella Deignan at McVeigh Associates* • Production services at Radio City Music Hall provided by *Bramson Productions, New York* • Production Manager: *Pete Croken* • Set Design: *Dawn Robyn Petrlik* • Lighting design: *Ed McCarthy* • House sound design: *Dan Gerhard* • **The Infinite Mind** wishes to offer a very special thanks to *Debra L. Knott* for her graceful persistence and unflagging support of this broadcast.